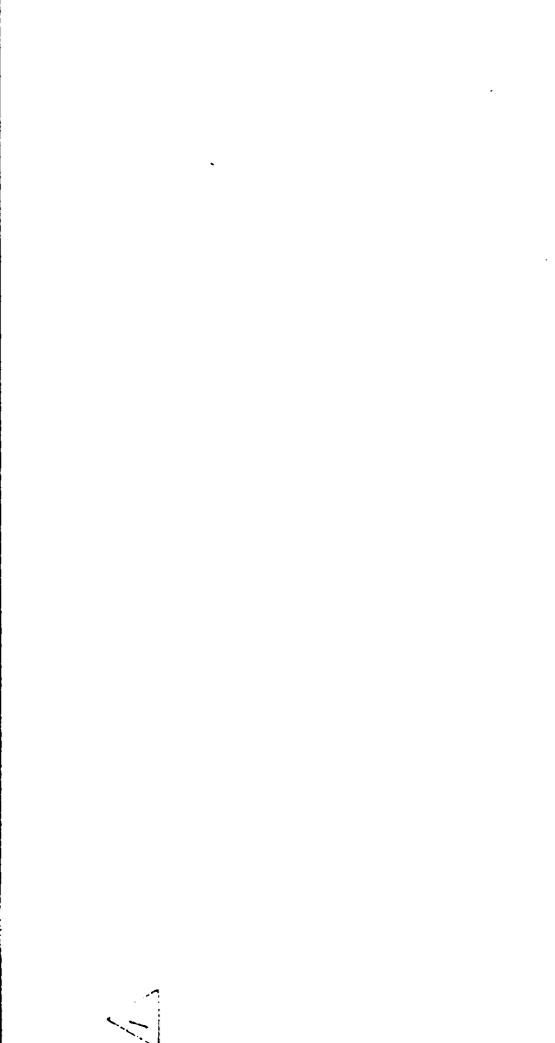
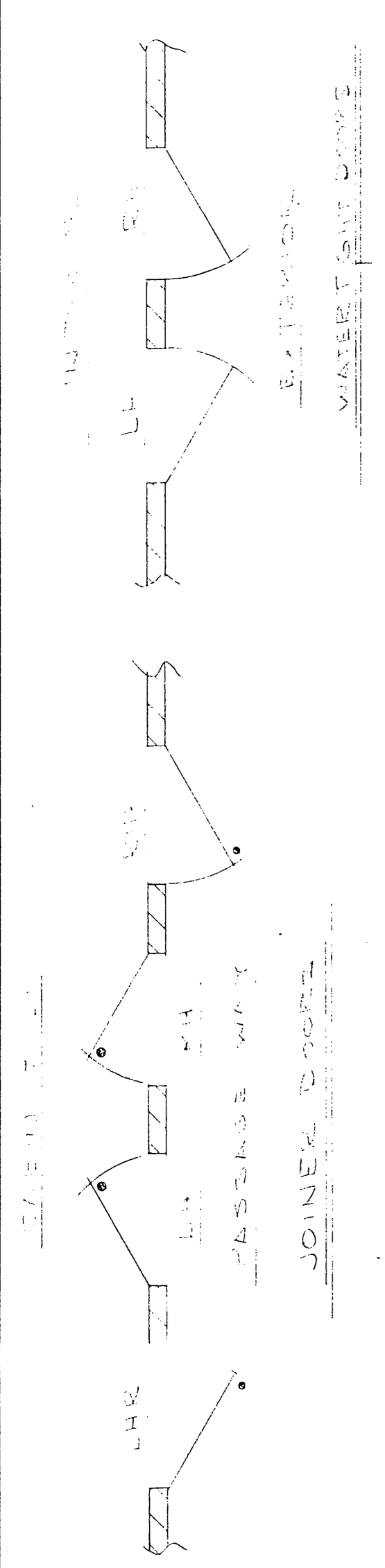
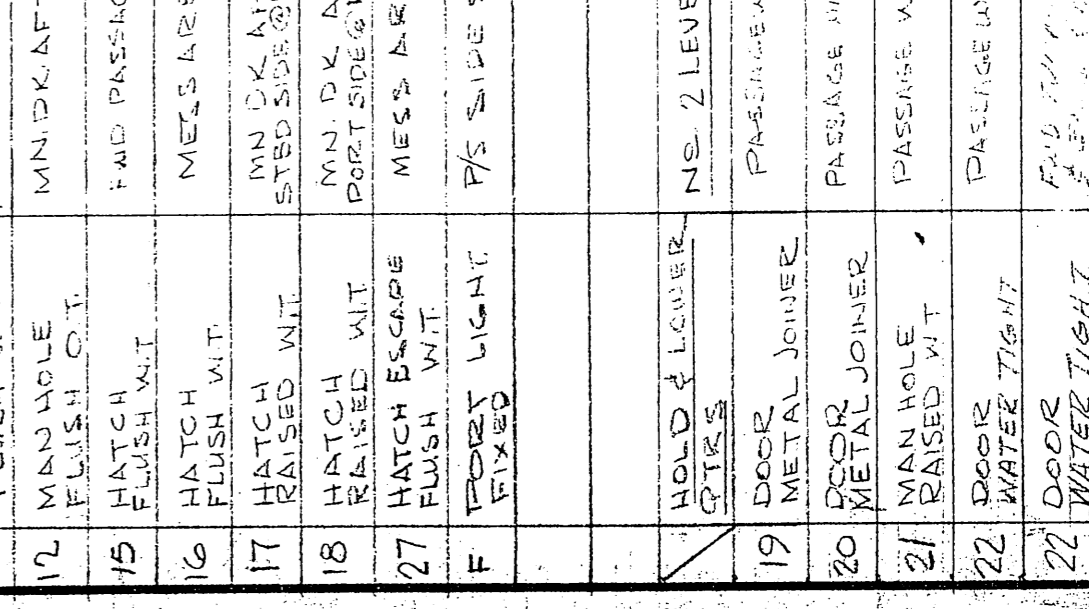
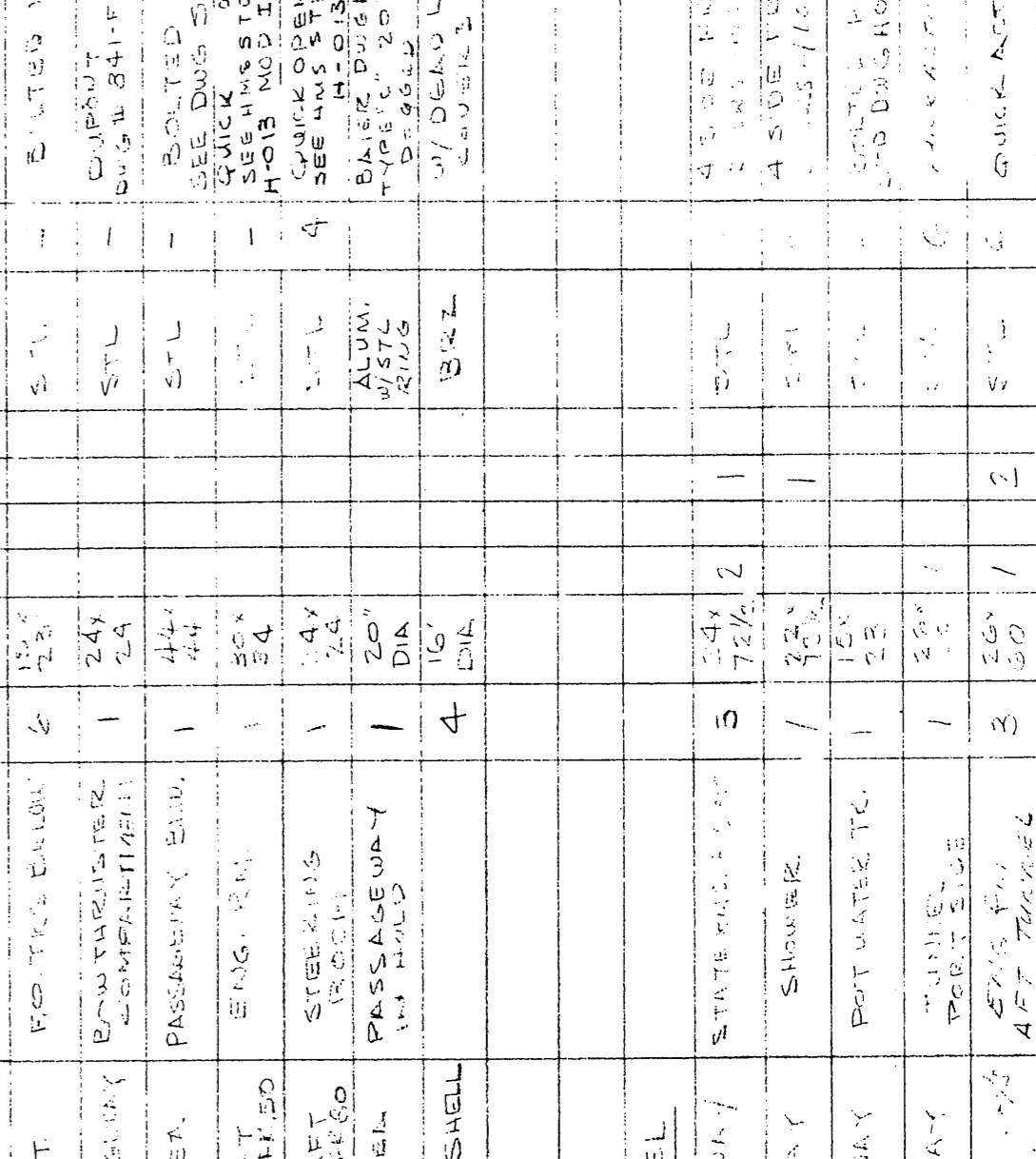
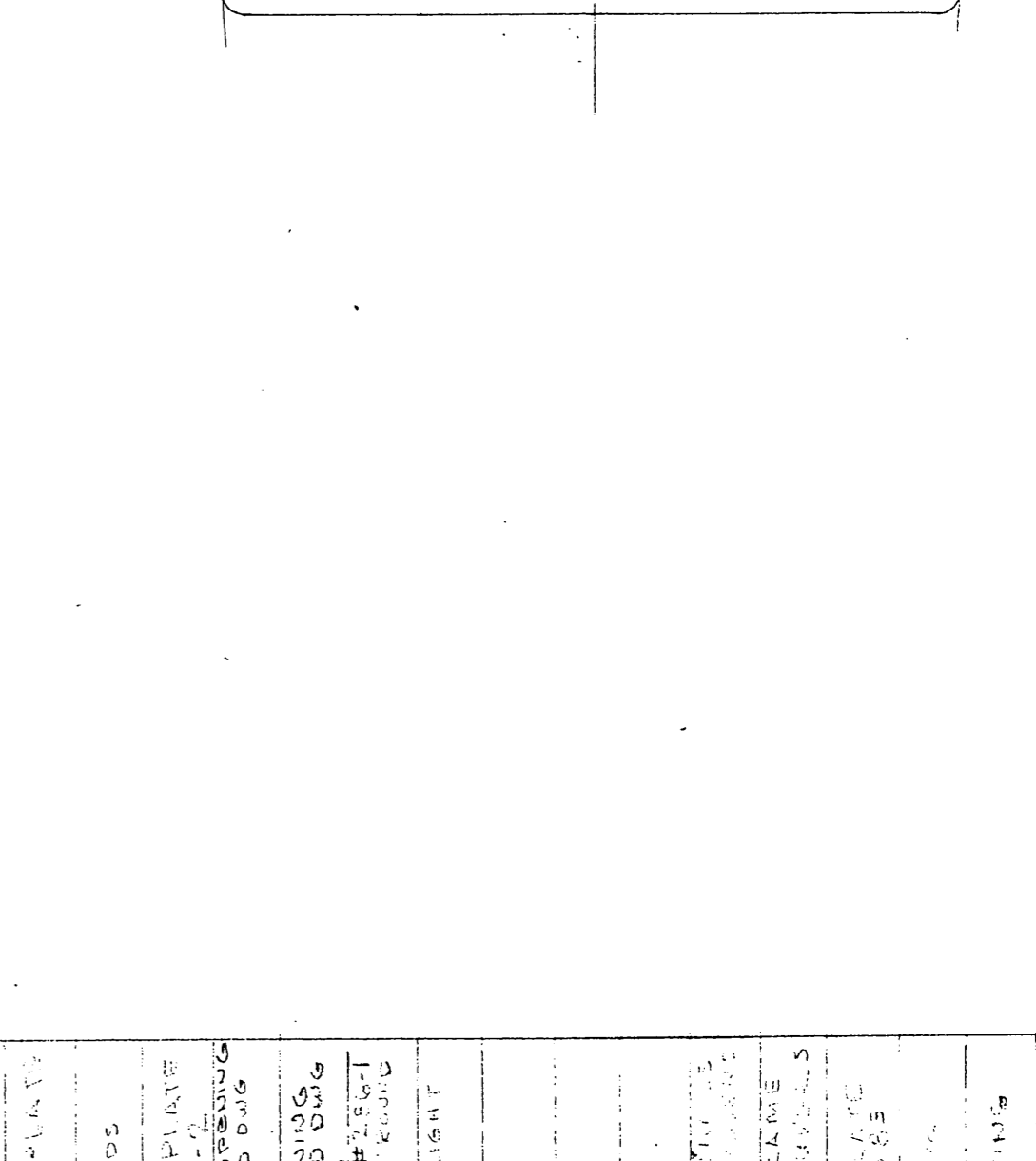
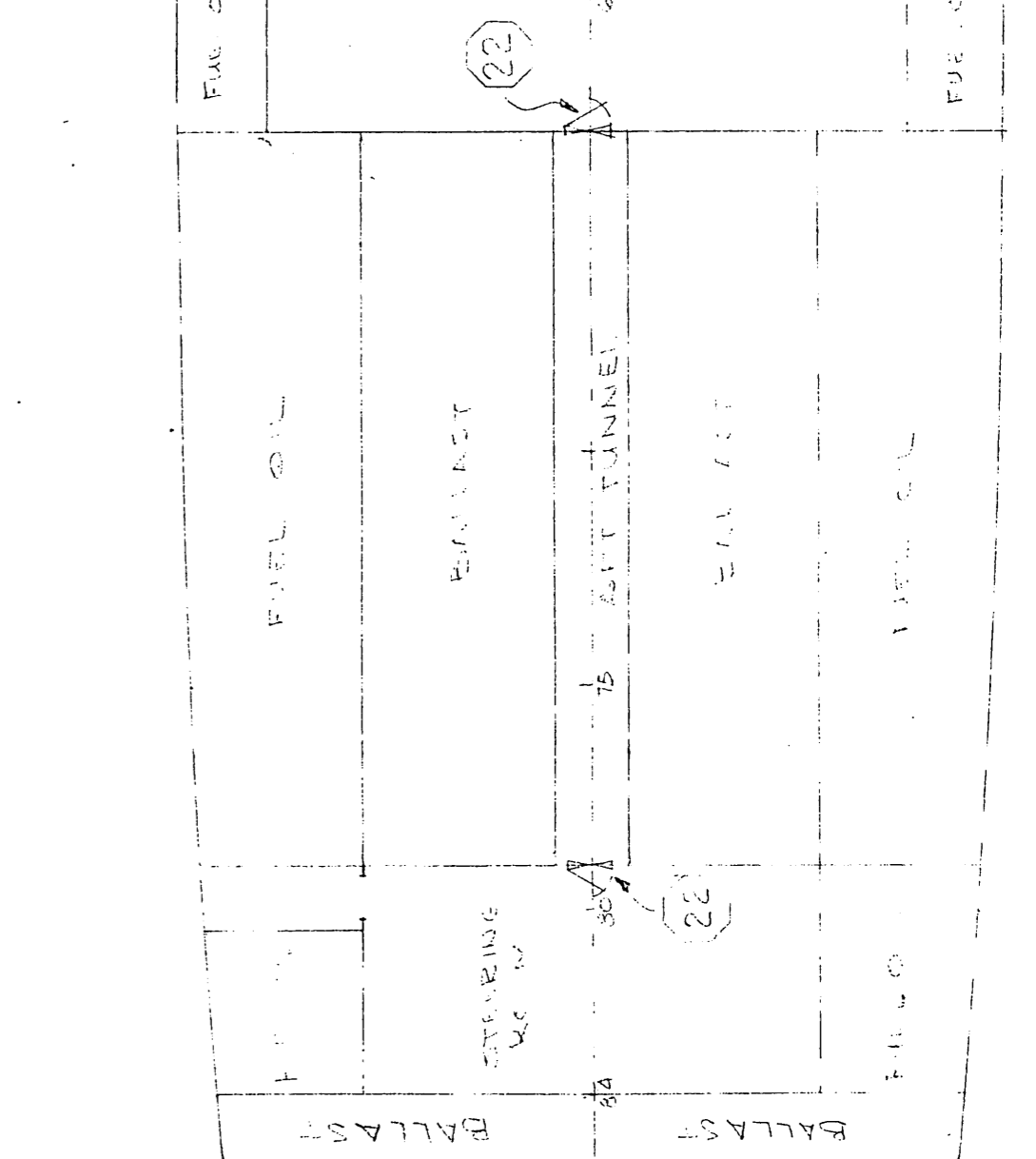
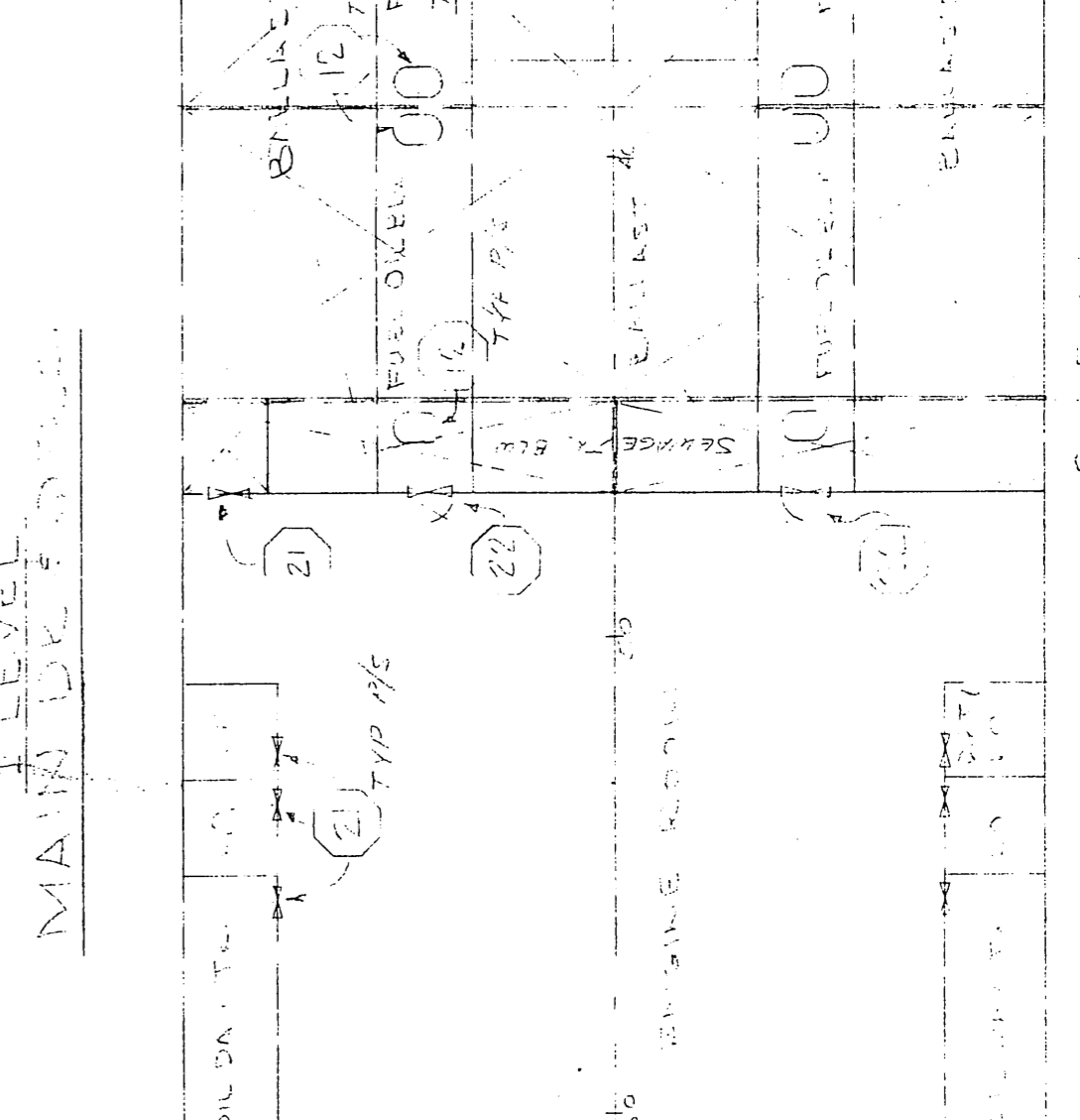
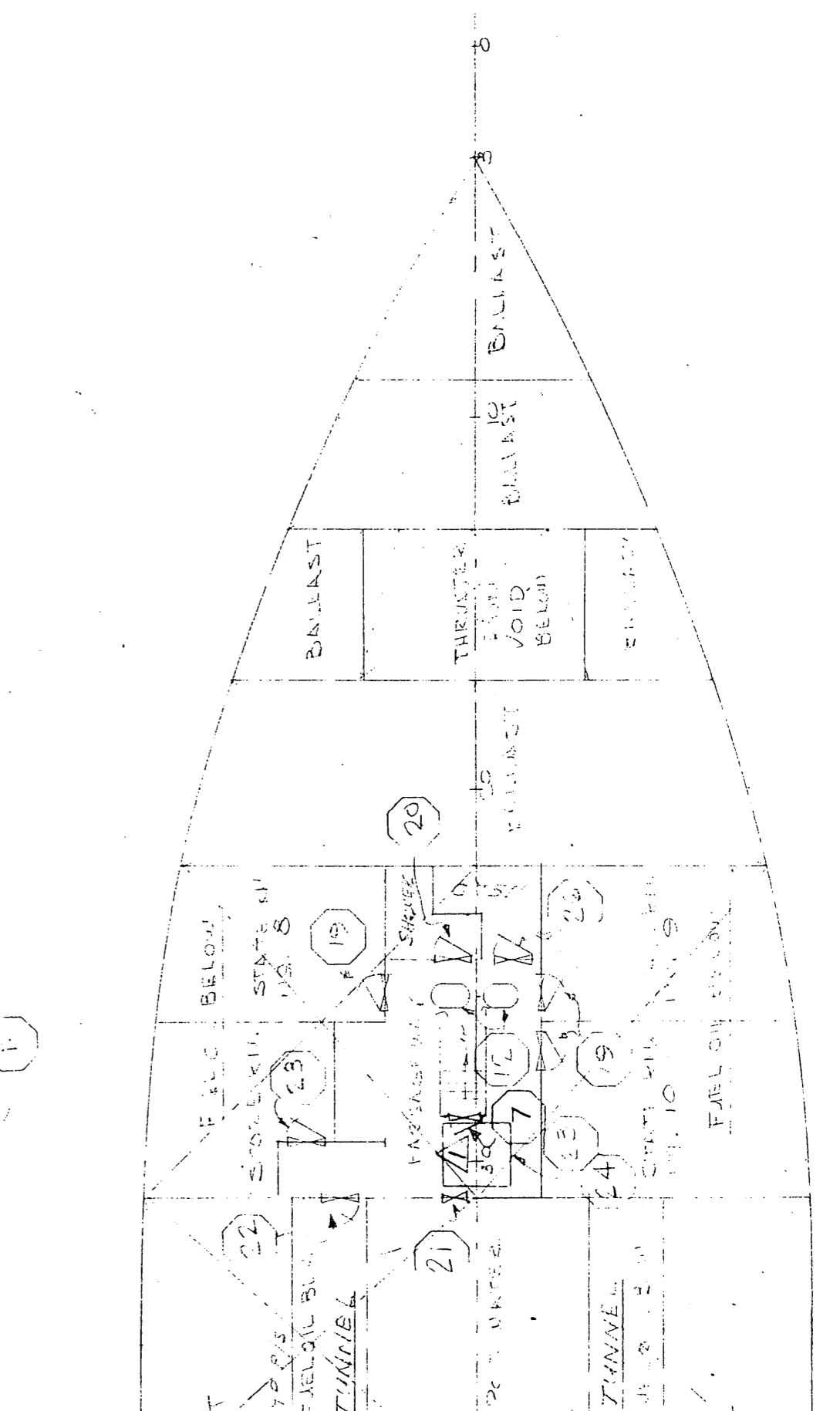
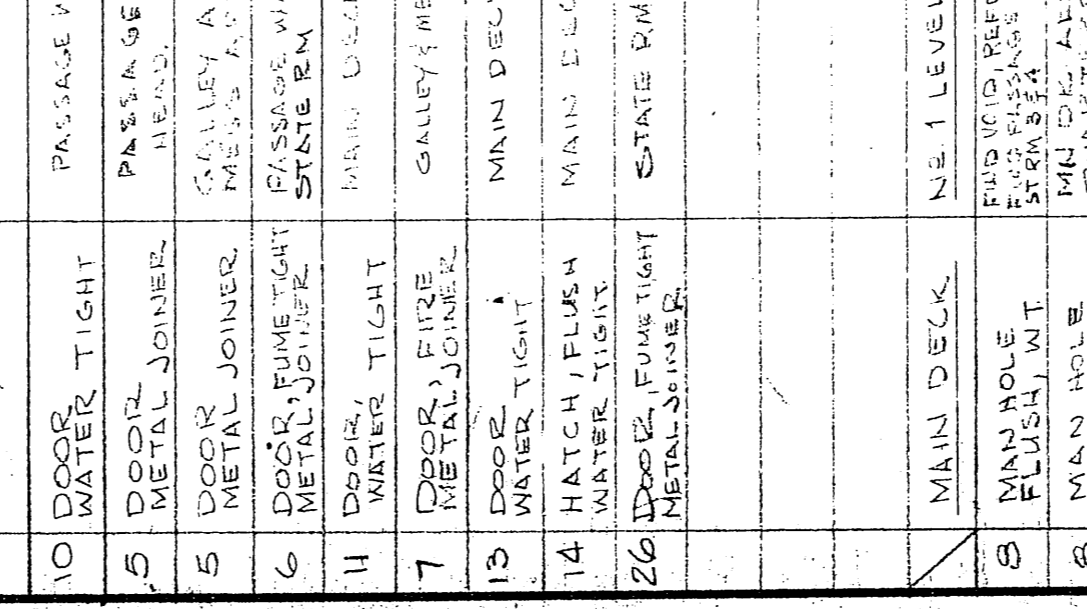
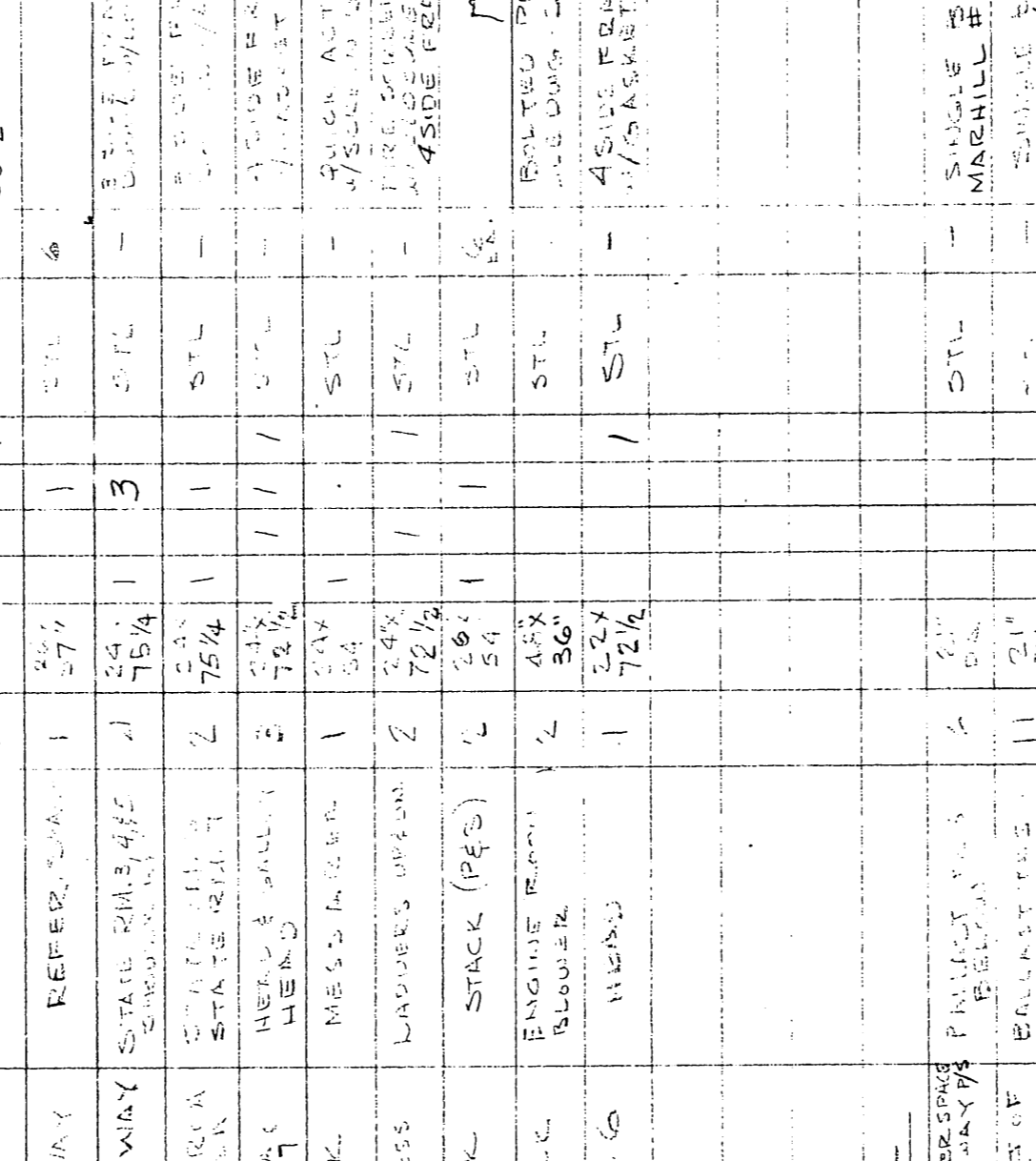
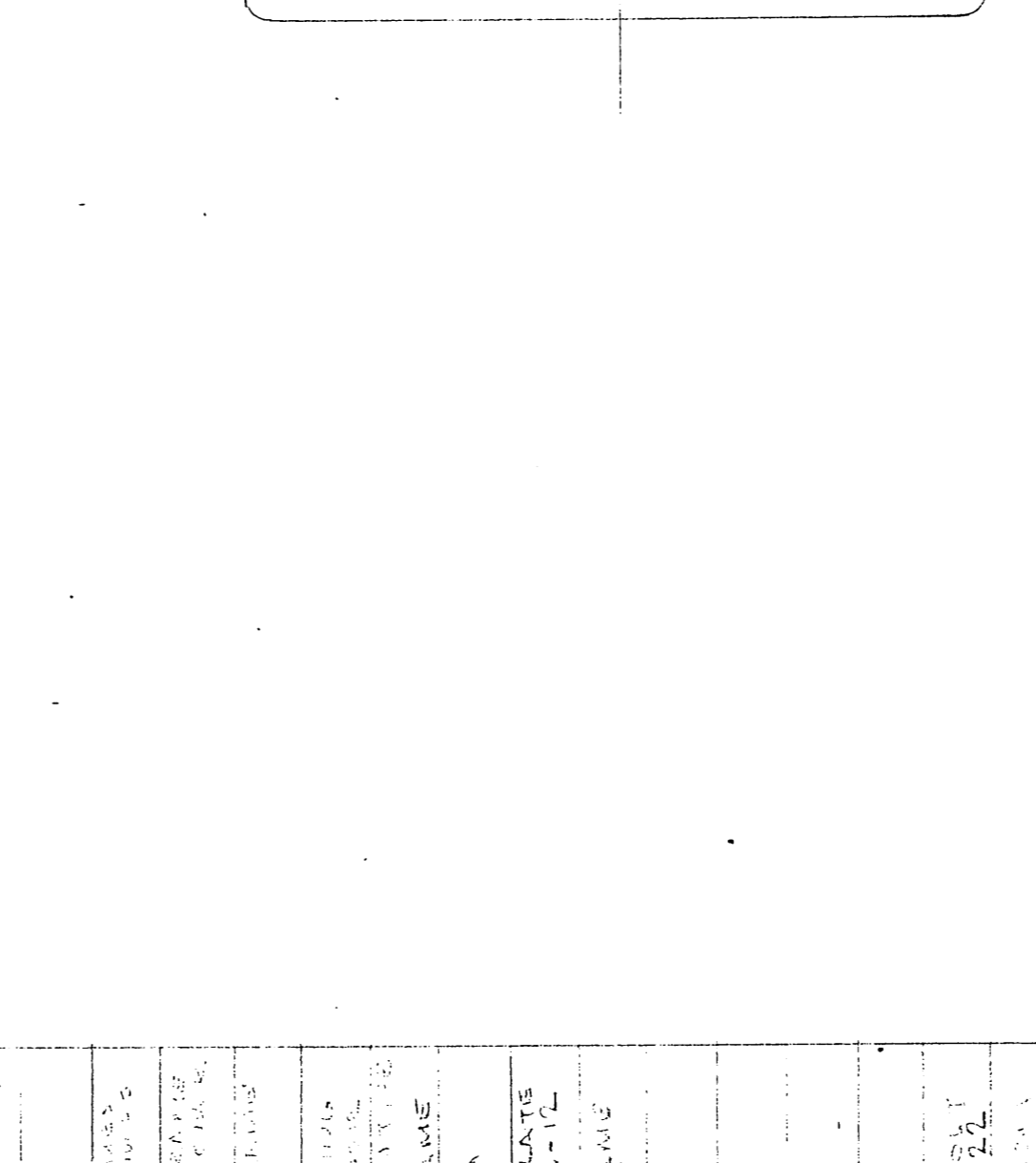
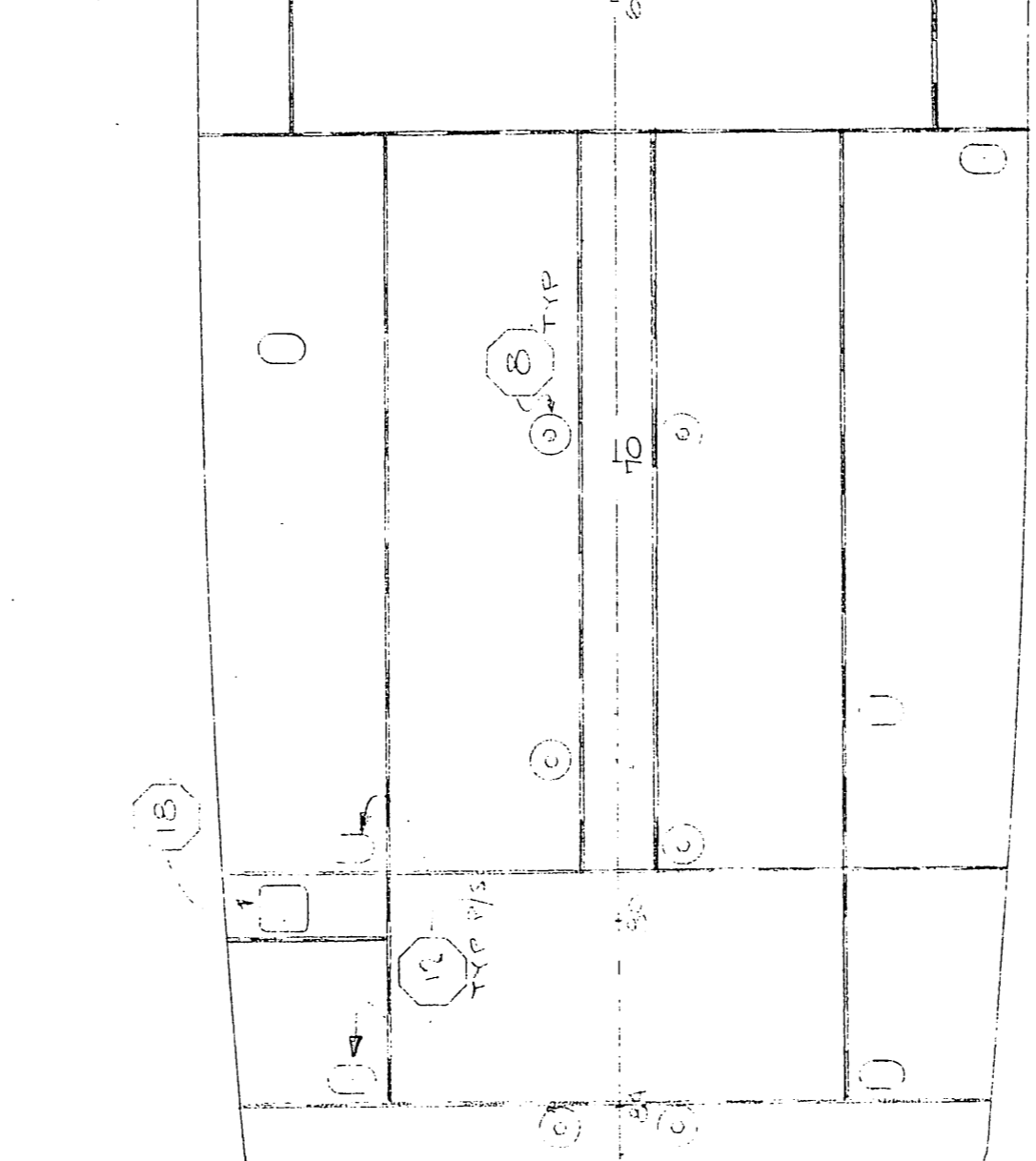
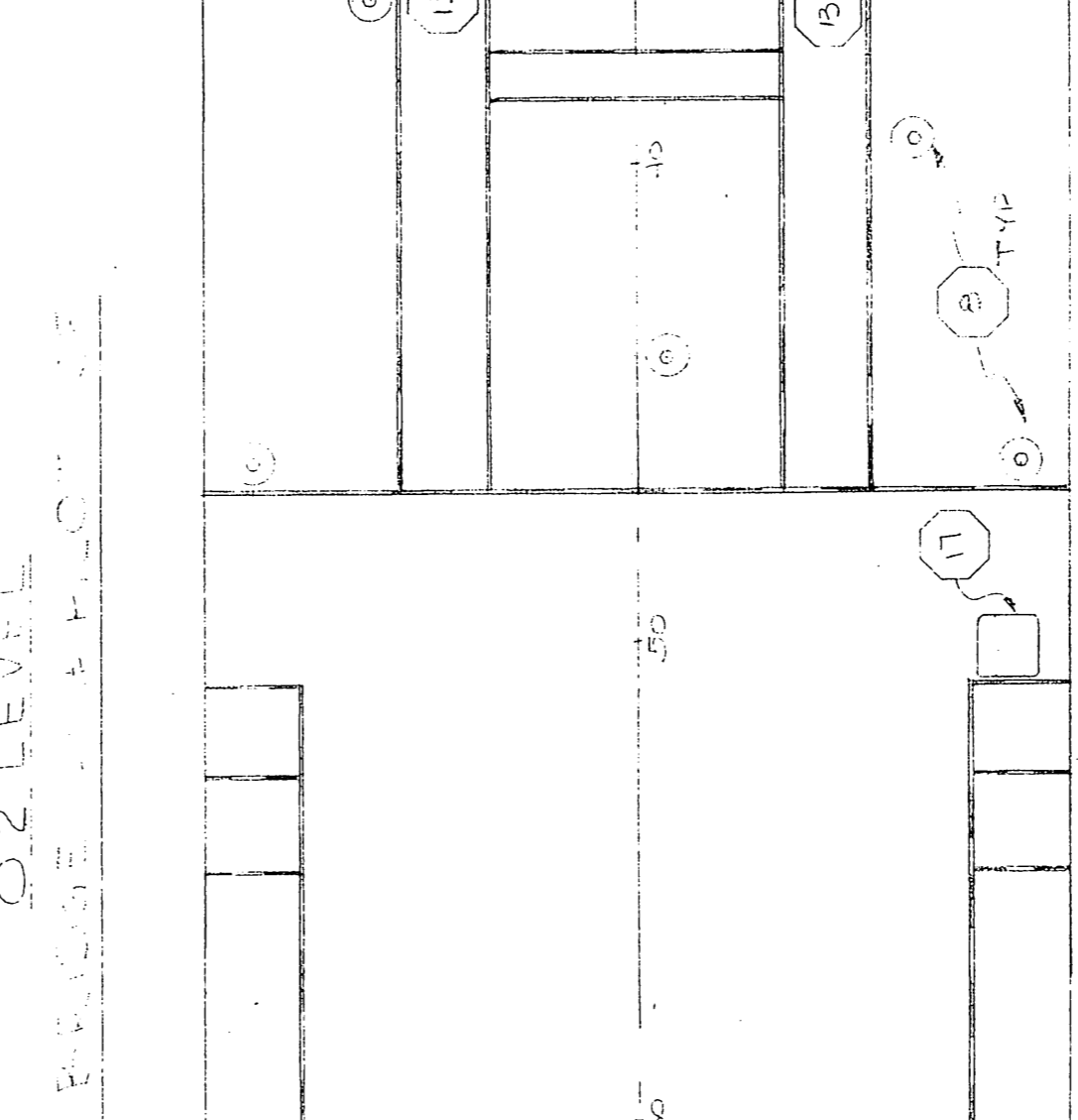
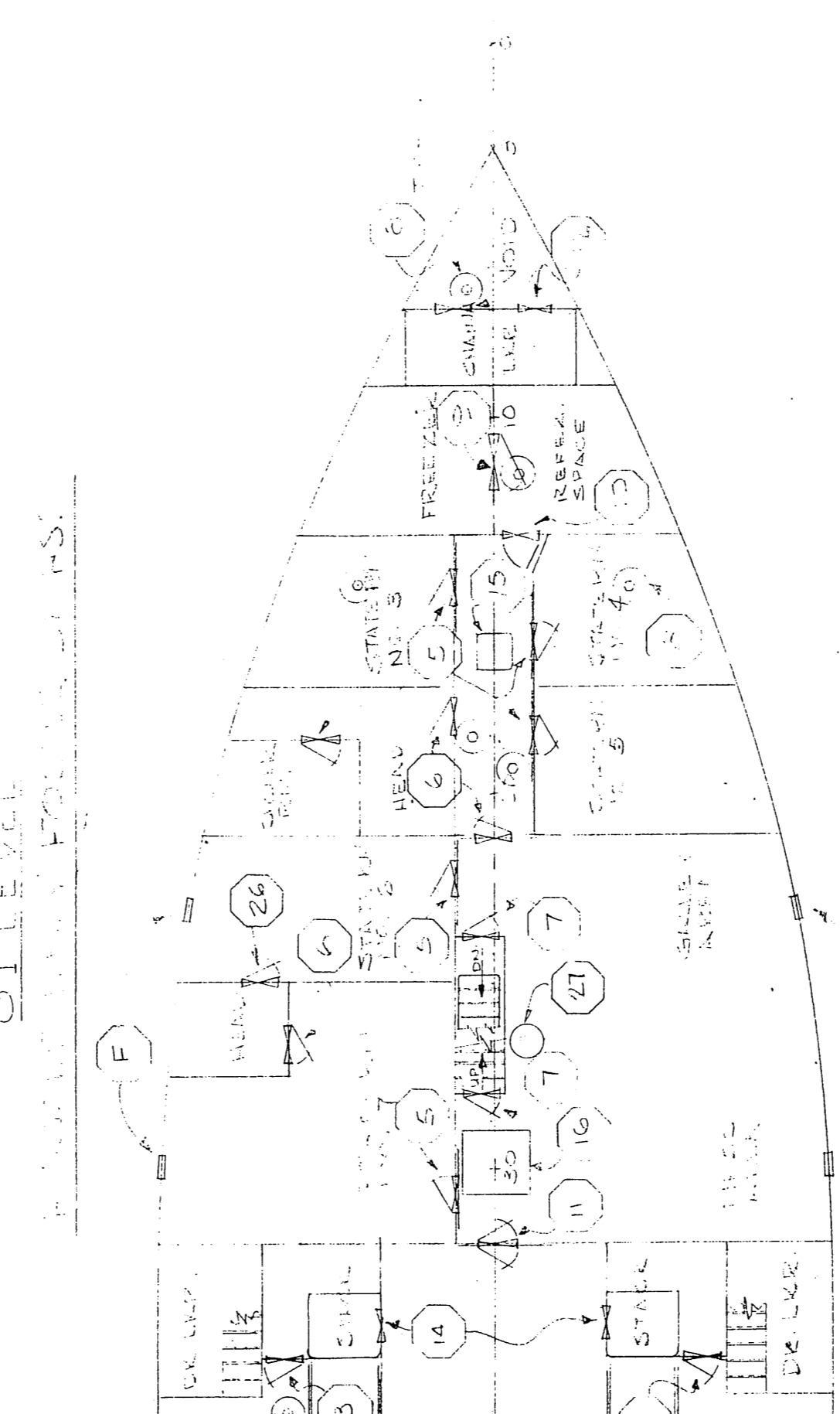
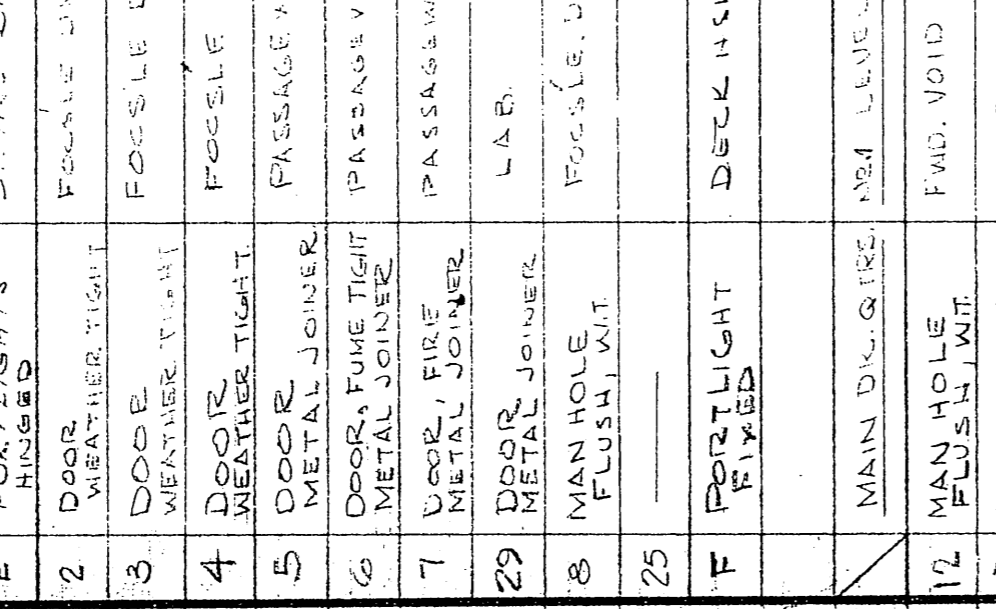
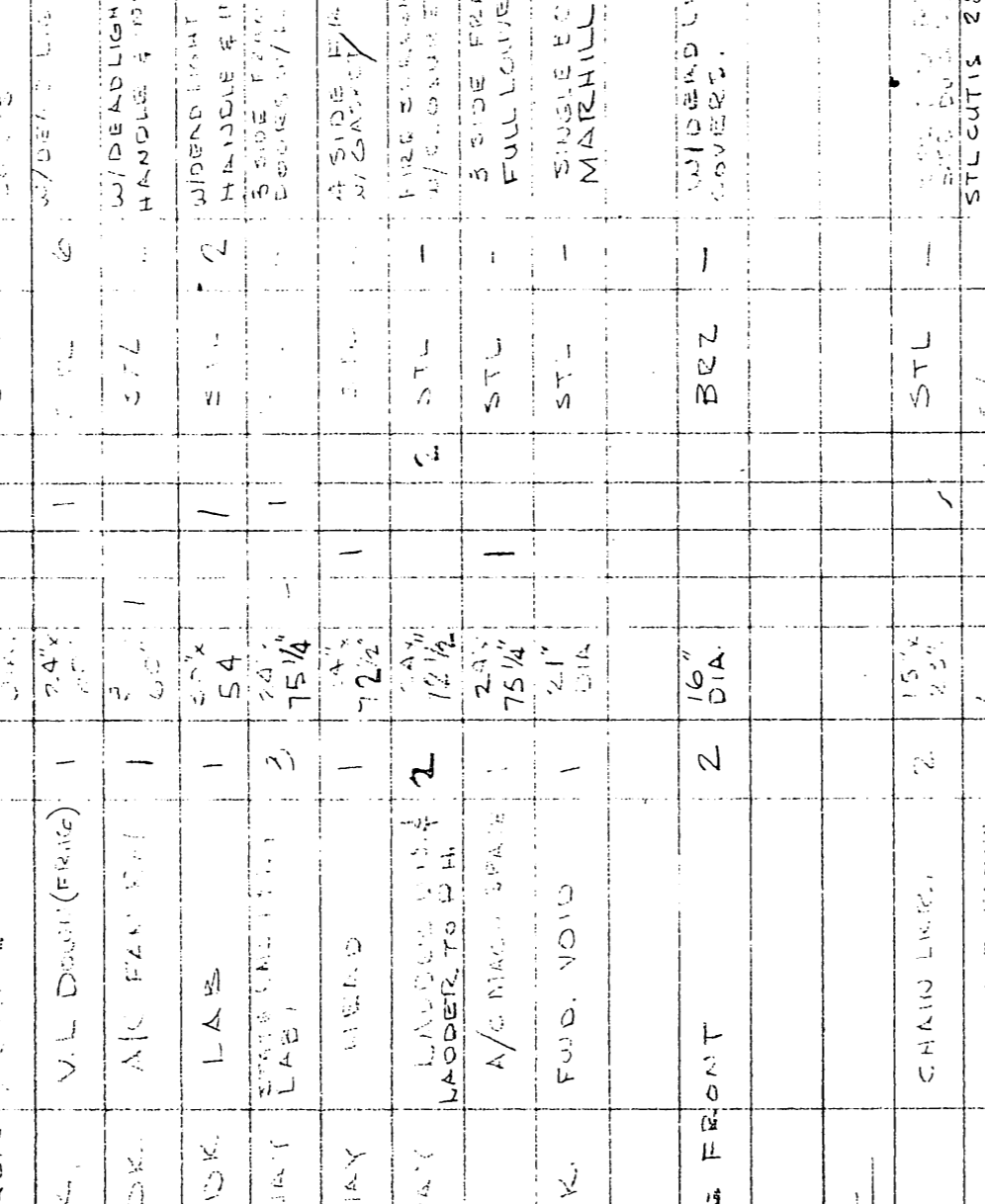
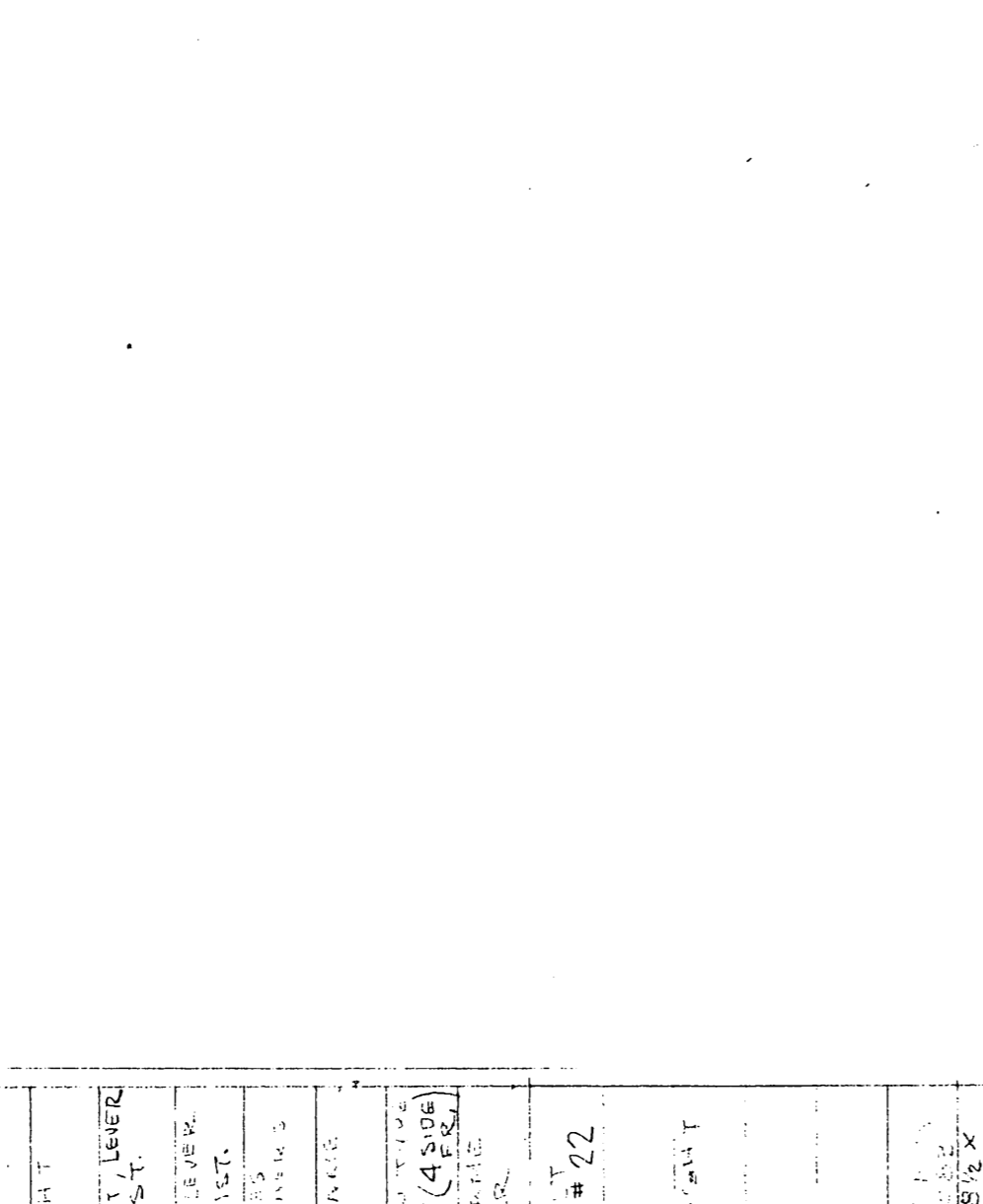
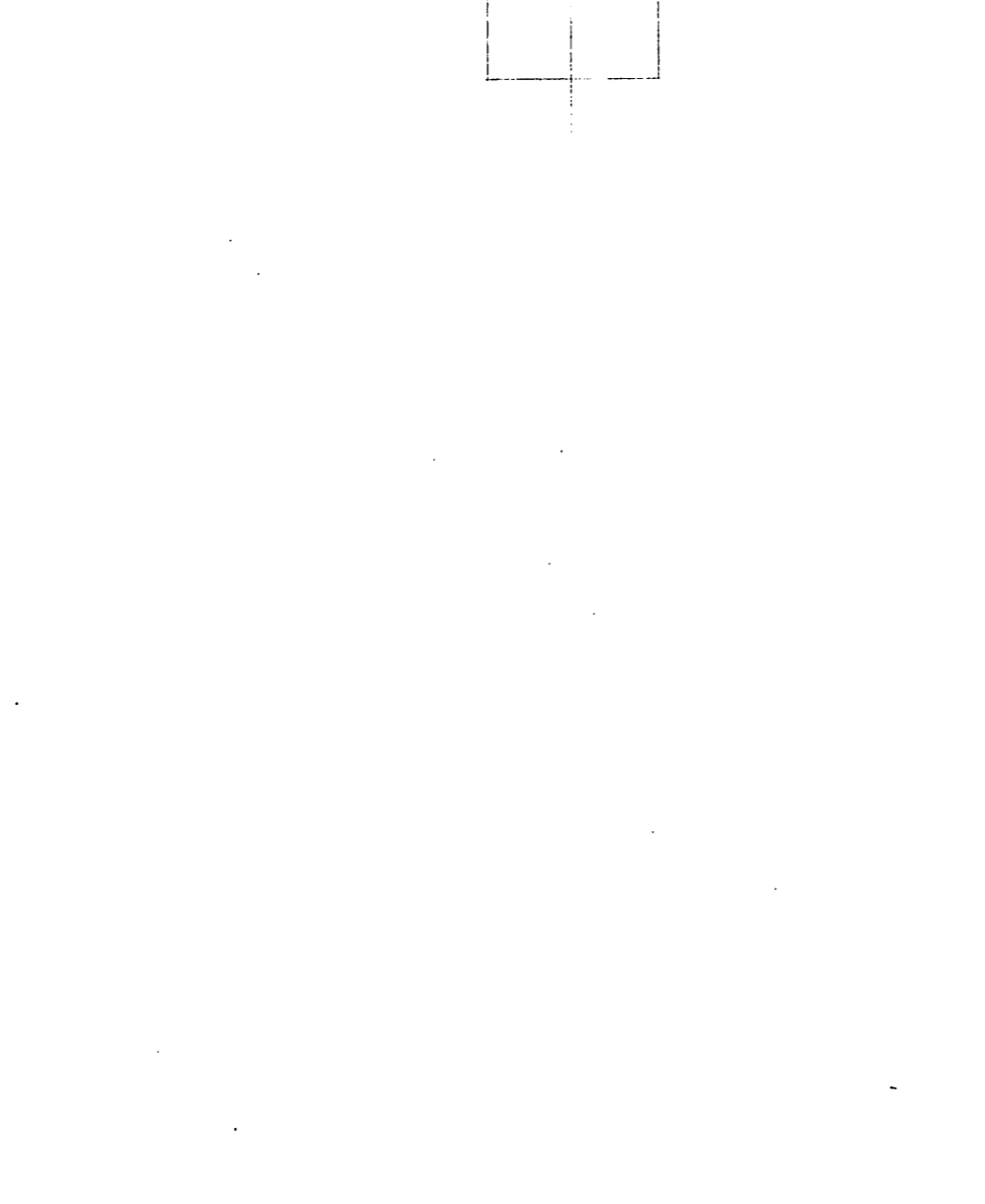
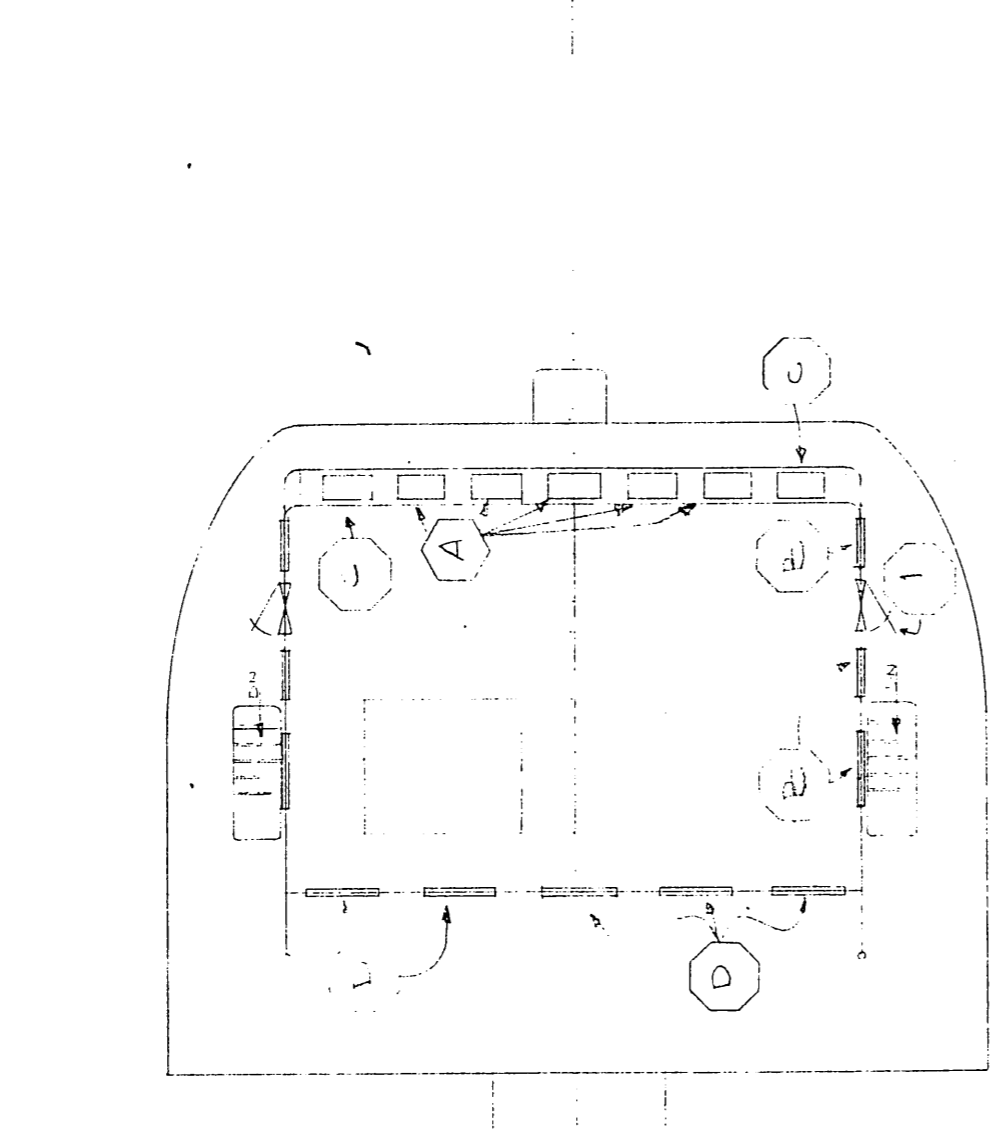
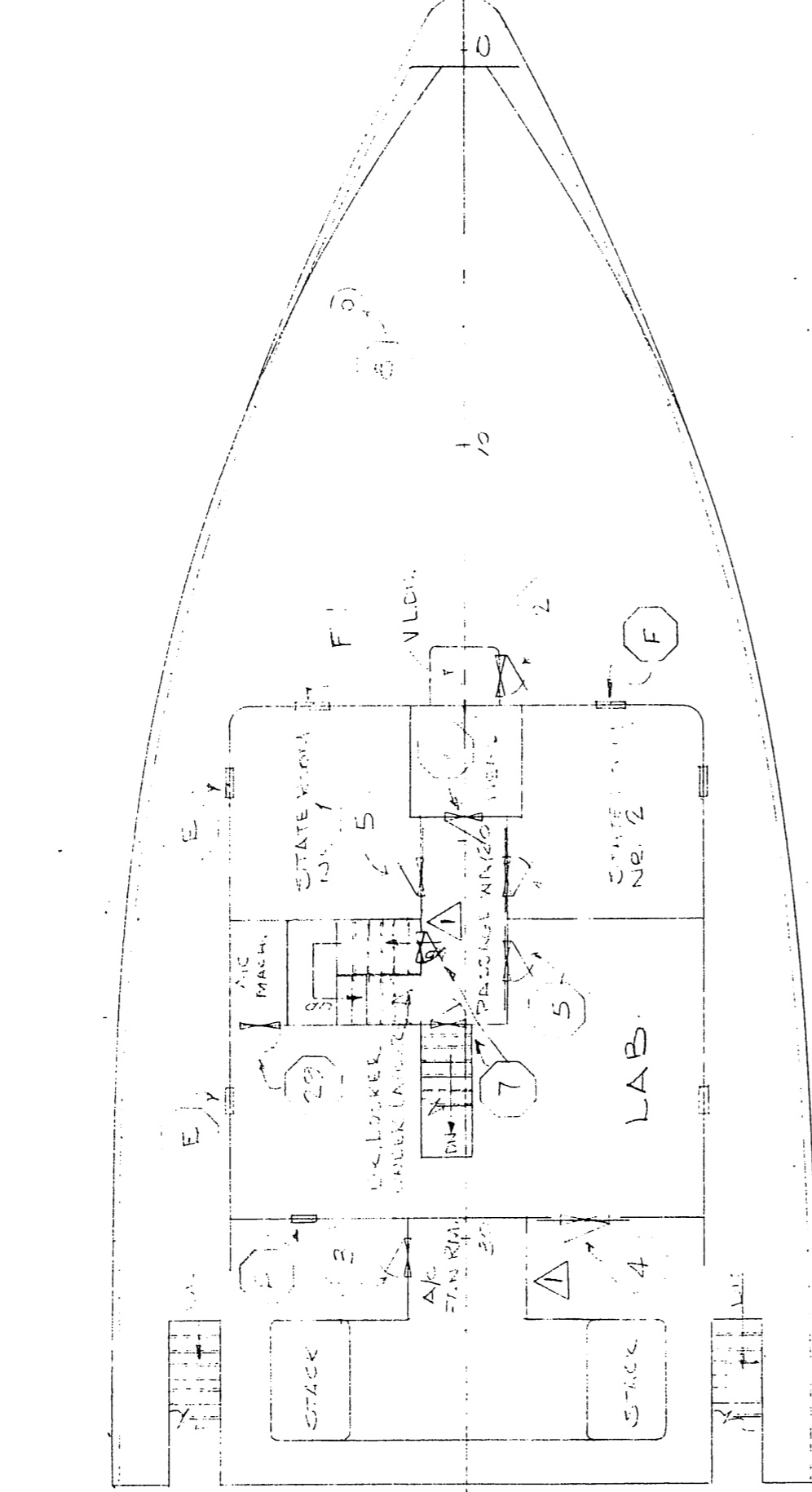


**GENERAL NOTES:**  
 1. SIZE COLUMN IN COLUMN HEADINGS  
 2. NUMBERED IN THE COLUMN DESIGNATIONS  
 3. LETTERS IN THE COLUMN DESIGNATIONS  
 4. CEILING HEIGHT TO BE AS SHOWN BY THE  
 5. UNLESS OTHERWISE SPECIFIED



NO.	DESCRIPTION	QTY	UNIT	REMARKS
7	USCG MARINE SERVICE	1	TON	PLATE SHEET 1/4"
8	DOOR	1	EA	ALUMINUM
9	MARKER	2	EA	ALUMINUM
10	MARKER	2	EA	ALUMINUM
11	MARKER	2	EA	ALUMINUM
12	MARKER	2	EA	ALUMINUM
13	MARKER	2	EA	ALUMINUM
14	MARKER	2	EA	ALUMINUM
15	MARKER	2	EA	ALUMINUM
16	MARKER	2	EA	ALUMINUM
17	MARKER	2	EA	ALUMINUM
18	MARKER	2	EA	ALUMINUM
19	MARKER	2	EA	ALUMINUM
20	MARKER	2	EA	ALUMINUM
21	MARKER	2	EA	ALUMINUM
22	MARKER	2	EA	ALUMINUM
23	MARKER	2	EA	ALUMINUM
24	MARKER	2	EA	ALUMINUM

NO.	DESCRIPTION	QTY	UNIT	REMARKS
25	MARKER	2	EA	ALUMINUM
26	MARKER	2	EA	ALUMINUM
27	MARKER	2	EA	ALUMINUM
28	MARKER	2	EA	ALUMINUM
29	MARKER	2	EA	ALUMINUM
30	MARKER	2	EA	ALUMINUM
31	MARKER	2	EA	ALUMINUM
32	MARKER	2	EA	ALUMINUM
33	MARKER	2	EA	ALUMINUM
34	MARKER	2	EA	ALUMINUM
35	MARKER	2	EA	ALUMINUM
36	MARKER	2	EA	ALUMINUM
37	MARKER	2	EA	ALUMINUM
38	MARKER	2	EA	ALUMINUM
39	MARKER	2	EA	ALUMINUM
40	MARKER	2	EA	ALUMINUM
41	MARKER	2	EA	ALUMINUM
42	MARKER	2	EA	ALUMINUM
43	MARKER	2	EA	ALUMINUM
44	MARKER	2	EA	ALUMINUM
45	MARKER	2	EA	ALUMINUM
46	MARKER	2	EA	ALUMINUM
47	MARKER	2	EA	ALUMINUM
48	MARKER	2	EA	ALUMINUM
49	MARKER	2	EA	ALUMINUM
50	MARKER	2	EA	ALUMINUM



MAY 18 1973

NO.	DATE	DESCRIPTION	BY
1	14 MAR 73	ADDED DOOR TO LADDER TO PORT LADDER 1/2 LOWER QTR. REMOVED DOOR NE. PORT LADDER	[Signature]

APPROVALS	DATE
USCG	
FCC	

U.S. NAVAL SHIP SYSTEMS COMMAND  
 WASHINGTON D.C. 20380  
 OCEANOGRAPHIC RESEARCH SHIP  
 AGOR (UTILITY) CLASS  
 HALTER MARINE SERVICES, INC.  
 P.O. BOX 28266 NEW ORLEANS, LA. 70128

SCALE	DATE	HALTER	DATE	DATE
1/4" = 1'-0"	1-15-73	1-15-73	1-15-73	1-15-73

NO.	DATE	DESCRIPTION	BY
1	1-15-73	ADDED DOOR TO LADDER TO PORT LADDER 1/2 LOWER QTR. REMOVED DOOR NE. PORT LADDER	[Signature]

NO.	DATE	DESCRIPTION	BY
1	1-15-73	ADDED DOOR TO LADDER TO PORT LADDER 1/2 LOWER QTR. REMOVED DOOR NE. PORT LADDER	[Signature]

NO.	DATE	DESCRIPTION	BY
1	1-15-73	ADDED DOOR TO LADDER TO PORT LADDER 1/2 LOWER QTR. REMOVED DOOR NE. PORT LADDER	[Signature]

NO.	DATE	DESCRIPTION	BY
1	1-15-73	ADDED DOOR TO LADDER TO PORT LADDER 1/2 LOWER QTR. REMOVED DOOR NE. PORT LADDER	[Signature]

NO.	DATE	DESCRIPTION	BY
1	1-15-73	ADDED DOOR TO LADDER TO PORT LADDER 1/2 LOWER QTR. REMOVED DOOR NE. PORT LADDER	[Signature]

NO.	DATE	DESCRIPTION	BY
1	1-15-73	ADDED DOOR TO LADDER TO PORT LADDER 1/2 LOWER QTR. REMOVED DOOR NE. PORT LADDER	[Signature]